



247 Gertrude Street FITZROY VIC

3 1

Favourably positioned, at the Paris End of one of Melbourne's most tightly held retail strips, Fitzroy's Iconic Gertrude Street.

- Double Storey Shop & 3 Bedroom Shop & Dwelling
- 6 Principle Rooms
- Flexible Commercial 1 Zoning caters to a multitude of uses (STCA)
- Comfortable order, with scope to value add
- Premiere location famous for its culinary delights, art galleries and on trend retail
- Vacant Possession

Current Covid-19 Notice

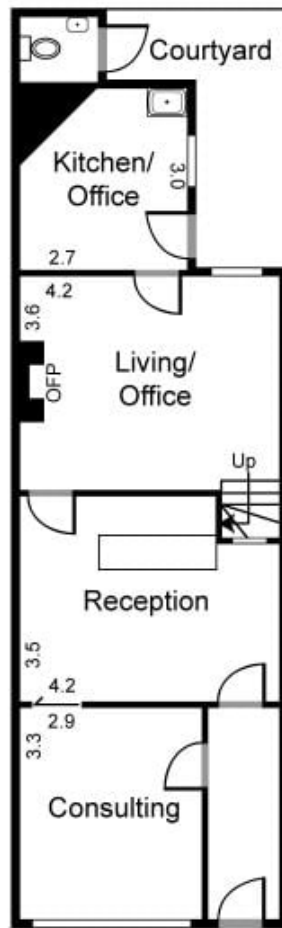
<https://www.vic.gov.au/coronavirus-covid-19-restrictions-victoria>

[For full version visit the website](https://www.petermarkovic.com.au)

Type : House

Price : \$ 1,250,000

View : <https://www.petermarkovic.com.au/sale/vic/inner-city/fitzroy/residential/house/7485188>



Ground Floor



First Floor