



5 Mayfield Street ABBOTSFORD VIC

2 2 1

This stunning, character-filled warehouse conversion promises to surprise and delight.

Located alongside the Yarra River, in walking distance to vibrant cafés and restaurants, it provides the perfect combination of accessibility and liveability. Proximity to the river trails, parks and Melbourne's CBD enhance the desirability.

Spread over three levels, the space combines the eclectic mix of original industrial/commercial edginess with modern elegance and style. Exposed wooden beams, original bricks and polished concrete floors complement the open-plan proportions, which offer great flexibility for the use of the space.

The residence boasts a huge light-filled, open living/dining room with a soaring ceiling void. Expansive bi-fold doors

Type : House

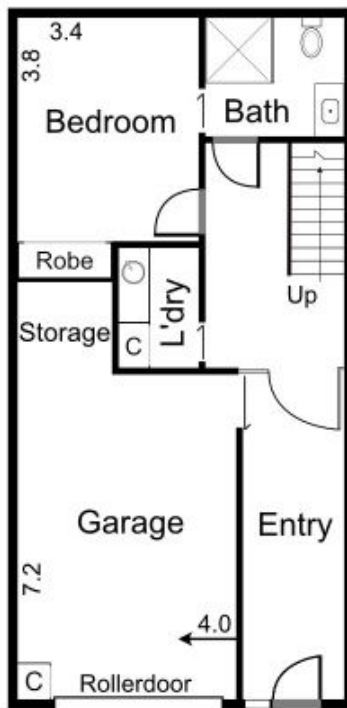
Price : \$ 1,006,000

View : <https://www.petermarkovic.com.au/sale/vic/inner-city/abbotsford/residential/house/7507723>

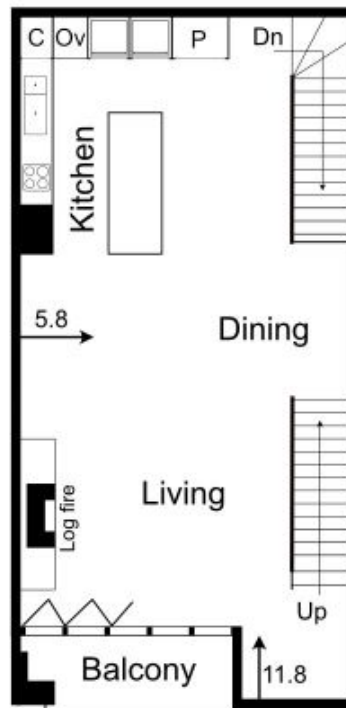


Paul Markovic
0411866464

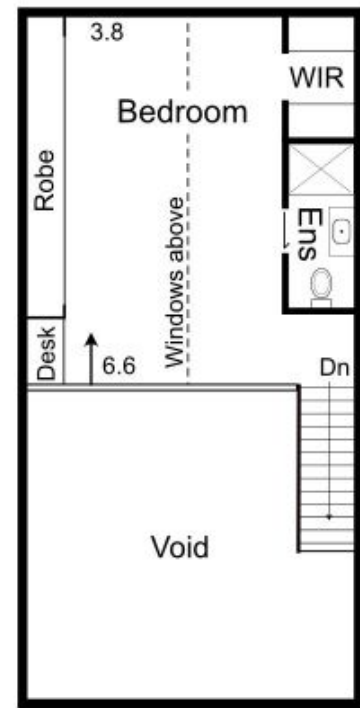
[For full version visit the website](https://www.petermarkovic.com.au)



Ground Floor



First Floor



Mezzanine level